

WNB Project is an active private equity and venture capital firm that specializes in investments in early-stage companies with strong management team and growth potential. Additionally we provide investment management services for private and corporate investors.

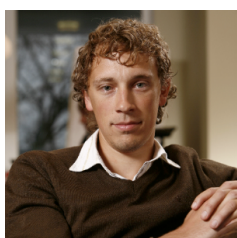
The company was established in 2007 as an equal partnership by two persons with broad experience of structuring and financing different business transactions and managing of various enterprises. Key persons of our team today are:



[Mr. Ivar Siimar](#) is a partner with a wide range of experience in investments, advisory and consultations field. Mr. Siimar has held several managerial positions in the fields of property development and advisory. He has also a firsthand experience with successful implementation of cross-border online database systems.



[Mr. Guido Kundla](#) has been active in various fields including wholesale and logistics, strategic sales and marketing management and property investments. He has also served as representative of Estonian Traders' Association, an organization bringing together retailers with common interests to represent them in various institutions locally and abroad.



[Mr. Margus Dintšenko](#) is the latest member of the team and is mainly responsible for pre-investment analysis and post investment project management. He has experiences in business-, tax consulting and audit services and has worked as a CFO on several projects.

We are located in Tallinn, Estonia and therefore the core of our investments are into Estonian companies with clear vision to grow internationally. As of today we have made two investments in partnership with Estonian Development Fund. However, our portfolio consists also investments to Ukraine, Bulgaria, Brazil.

Our investment strategy is not to limit our investments based on its region nor industry.

The main principles we comply within our investments are following:

- Maximum investment period 3-5 years
- Investment amount up to 1 Mio EUR, in case of syndicate investments no limitations
- We do not have to own the majority of shares. However, the management team should be a co-shareholder.
- Target minimum return of 30% per year.

We seek investments in early-stage companies, typically in a company's first round of financing. We request an executive summary and business plan and complete resumes of management from all entrepreneurs in order to identify key factors of the project. WNB Project's objective is to be an active participant and to add value to its investments. As appropriate, we will provide advice on issues such as strategy, organization, recruiting and raising capital. We believe that our experience and network of advisors, as well as the extensive international network of contacts benefit to our portfolio companies' success.